

EVIO Labs Medford (pka Kenevir Research)
 540 East Vilas Road, Suite F, Central Point, OR 97502
 541-668-7444 / OLCC 010-1001626980D / www.EVIOLabs.com

Ebb and Flow Essentials Vitality Gummy

Craft Grade Goods LLC
 AG-L1053129FP



Confident Cannabis ID: 2101KR0025.0068

Sample ID: M210025-01

Matrix: Ingestible

METRC Batch #:

Sampling Method/SOP: SOP.T.20.010

Date Sampled: 1/8/2021 9:00:00AM

Date Accepted: 01/08/21

Harvest/Process Lot ID: 10-2020.10.27-11.3

Batch ID: EFSL20201103

Batch Size (g): 57246g

Unit for Sale: 30 Gummies

Harvest/Production Date: 11-3-2020

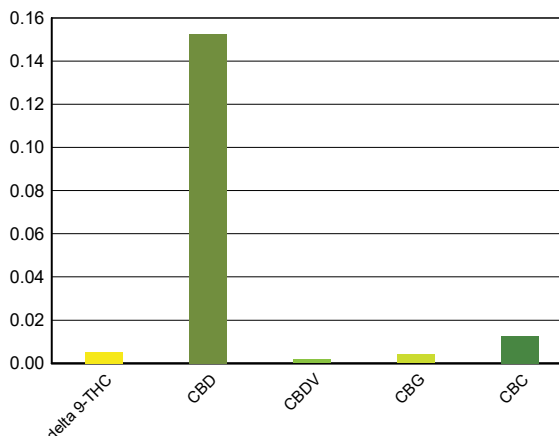
Cannabinoid Analysis

Date/Time Extracted: 01/11/21 10:34

Date/Time Analyzed: 01/11/21 22:07

Analysis Method/SOP: SOP.T.40.020

Cannabinoids	LOQ(%)	mg/g	% weight	Cannabinoid Profile	
Total THC ((THCA*0.877)+Δ9THC)		0.05	0.005		
Total CBD ((CBDA*0.877)+CBD)		1.53	0.153		
THCA	0.002	< LOQ	< LOQ		
delta 9-THC	0.002	0.05	0.005		
delta 8-THC	0.002	< LOQ	< LOQ		
THCV	0.002	< LOQ	< LOQ		
CBGA	0.002	< LOQ	< LOQ		
CBDA	0.002	< LOQ	< LOQ		
CBD	0.002	1.53	0.153		
CBDV	0.002	< LOQ	< LOQ		
CBN	0.002	< LOQ	< LOQ		
CBG	0.002	0.04	0.004		
CBC	0.002	0.13	0.013		
THCV-A	0.002	< LOQ	< LOQ		
CBDV-A	0.002	< LOQ	< LOQ		
CBCA	0.002	< LOQ	< LOQ		
Sum of tested Cannabinoids	0.002	1.74	0.174		



"Total THC" and "Total CBD" are calculated values and are an Oregon reporting requirement (OAR 333-064-0100). For Cannabinoid analysis, only delta 9-THC, THCA, CBD, CBDA are ORELAP accredited analytes. Cannabinoid values reported for plant matter are dry weight corrected; Oregon Water Activity action level is 0.65Aw and Oregon Moisture Content action level is 15%. Samples above limit will be highlighted RED; FD = Field Duplicate; LOQ = Limit of Quantitation.

Stephanie Moon
 Laboratory Director - 1/13/2021

EVIO Labs Medford (pka Kenevir Research)
540 East Vilas Road, Suite F, Central Point, OR 97502
541-668-7444 / OLCC 010-1001626980D / www.EVIOLabs.com

Quality Control

Batch: M21A023 - SOP.T.30.050 Prep for Cannabinoids

Blank(M21A023-BLK1)			Extracted: 01/11/21 10:34		Analyzed: 01/11/21 21:34		
Analyte	Result	LOQ	Recovery Limits	Analyte	Result	LOQ	Recovery Limits
THCA	< LOQ	0.002 (%)	< LOQ	delta 9-THC	< LOQ	0.002 (%)	< LOQ
delta 8-THC	< LOQ	0.002 (%)	< LOQ	THCV-A	< LOQ	0.002 (%)	< LOQ
THCV	< LOQ	0.002 (%)	< LOQ	CBDA	< LOQ	0.002 (%)	< LOQ
CBD	< LOQ	0.002 (%)	< LOQ	CBDV-A	< LOQ	0.002 (%)	< LOQ
CBDV	< LOQ	0.002 (%)	< LOQ	CBG	< LOQ	0.002 (%)	< LOQ
CBGA	< LOQ	0.002 (%)	< LOQ	CBN	< LOQ	0.002 (%)	< LOQ
CBCA	< LOQ	0.002 (%)	< LOQ	CBC	< LOQ	0.002 (%)	< LOQ
Sum of tested Cannabinoid:	< LOQ	0.002 (%)	< LOQ				

LCS(M21A023-BS1)			Extracted: 01/11/21 10:34		Analyzed: 01/11/21 21:51		
Analyte	% Recovery	LOQ	Recovery Limits	Analyte	% Recovery	LOQ	Recovery Limits
THCA	100	(%)	70-130	delta 9-THC	105	(%)	70-130
THCV	91.8	(%)	70-130	CBDA	99.3	(%)	70-130
CBD	98.1	(%)	70-130	CBG	111	(%)	70-130
CBGA	101	(%)	70-130	CBN	113	(%)	70-130
CBCA	99.6	(%)	70-130	CBC	110	(%)	70-130



Stephanie Moon
 Laboratory Director - 1/13/2021