

EVIO Labs Medford (pka Kenevir Research)  
540 East Vilas Road, Suite F, Central Point, OR 97502  
541-668-7444 / OLCC 010-1001626980D / www.EVIO Labs.com

## Ebb and Flow Essentials Vitality Gummies

Craft Grade Goods LLC

AG-L1053129FP



Ebb & Flow  
ESSENTIALS



Confident Cannabis ID: 2012KR0022.6346

Sample ID: M201990-03

Matrix: Ingestible

METRC Batch #:

Sampling Method/SOP: SOP.T.20.010

Date Sampled: 12/3/2020 9:00:00AM

Date Accepted: 12/03/20

Harvest/Process Lot ID: EFEVG300-20201030

Batch ID: Cherry Lime

Batch Size (g): 66120g

Unit for Sale: 30 pieces

Harvest/Production Date: 10-30-2020

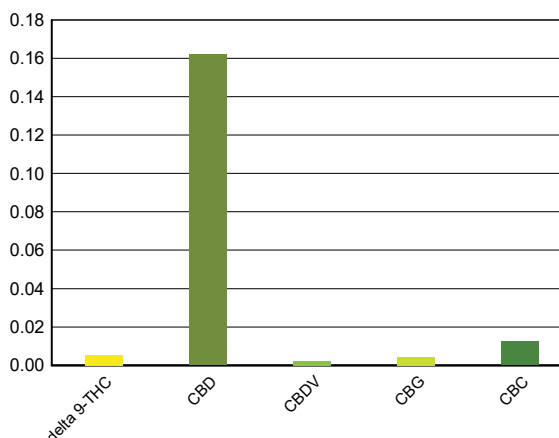
## Cannabinoid Analysis

Date/Time Extracted: 12/04/20 08:01

Date/Time Analyzed: 12/05/20 23:59

Analysis Method/SOP: SOP.T.40.020

Cannabinoids	LOQ(%)	mg/g	% weight	Cannabinoid Profile
<b>Total THC</b> ((THCA*0.877)+Δ9THC)		<b>0.05</b>	<b>0.005</b>	
<b>Total CBD</b> ((CBDA*0.877)+CBD)		<b>1.62</b>	<b>0.162</b>	
THCA	0.002	< LOQ	< LOQ	
delta 9-THC	0.002	0.05	0.005	
delta 8-THC	0.002	< LOQ	< LOQ	
THCV	0.002	< LOQ	< LOQ	
CBGA	0.002	< LOQ	< LOQ	
CBDA	0.002	< LOQ	< LOQ	
CBD	0.002	1.62	0.162	
CBDV	0.002	< LOQ	< LOQ	
CBN	0.002	< LOQ	< LOQ	
CBG	0.002	0.04	0.004	
CBC	0.002	0.12	0.012	
THCV-A	0.002	< LOQ	< LOQ	
CBDV-A	0.002	< LOQ	< LOQ	
CBCA	0.002	< LOQ	< LOQ	
Sum of tested Cannabinoids	0.002	1.86	0.186	



"Total THC" and "Total CBD" are calculated values and are an Oregon reporting requirement (OAR 333-064-0100). For Cannabinoid analysis, only delta 9-THC, THCA, CBD, CBDA are ORELAP accredited analytes. Cannabinoid values reported for plant matter are dry weight corrected; Oregon Water Activity action level is 0.65Aw and Oregon Moisture Content action level is 15%; Samples above limit will be highlighted RED; FD = Field Duplicate; LOQ = Limit of Quantitation.

Stephanie Moon  
Laboratory Director - 12/8/2020

Page 1 of 2

EVIO Labs Medford (pka Kenevir Research)  
 540 East Vilas Road, Suite F, Central Point, OR 97502  
 541-668-7444 / OLCC 010-1001626980D / www.EVIO Labs.com

## Quality Control

**Batch: M20L020 - SOP.T.30.050 Prep for Cannabinoids**

Blank(M20L020-BLK1)				Extracted: 12/04/20 08:01		Analyzed: 12/05/20 22:37	
Analyte	Result	LOQ	Recovery Limits	Analyte	Result	LOQ	Recovery Limits
THCA	< LOQ	0.002 (%)	< LOQ	delta 9-THC	< LOQ	0.002 (%)	< LOQ
delta 8-THC	< LOQ	0.002 (%)	< LOQ	THCV-A	< LOQ	0.002 (%)	< LOQ
THCV	< LOQ	0.002 (%)	< LOQ	CBDA	< LOQ	0.002 (%)	< LOQ
CBD	< LOQ	0.002 (%)	< LOQ	CBDV-A	< LOQ	0.002 (%)	< LOQ
CBDV	< LOQ	0.002 (%)	< LOQ	CBG	< LOQ	0.002 (%)	< LOQ
CBGA	< LOQ	0.002 (%)	< LOQ	CBN	< LOQ	0.002 (%)	< LOQ
CBCA	< LOQ	0.002 (%)	< LOQ	CBC	< LOQ	0.002 (%)	< LOQ
Sum of tested Cannabinoid:	< LOQ	0.002 (%)	< LOQ				

LCS(M20L020-BS1)				Extracted: 12/04/20 08:01		Analyzed: 12/05/20 22:54	
Analyte	% Recovery	LOQ	Recovery Limits	Analyte	% Recovery	LOQ	Recovery Limits
THCA	106	(%)	70-130	delta 9-THC	109	(%)	70-130
THCV	104	(%)	70-130	CBDA	108	(%)	70-130
CBD	106	(%)	70-130	CBG	107	(%)	70-130
CBGA	102	(%)	70-130	CBN	111	(%)	70-130
CBCA	103	(%)	70-130	CBC	109	(%)	70-130



Stephanie Moon  
 Laboratory Director - 12/8/2020

Page 2 of 2